

FORM TP 2017226



TEST CODE **02125020**

MAY/JUNE 2017

**CARIBBEAN EXAMINATIONS COUNCIL**

**CARIBBEAN ADVANCED PROFICIENCY EXAMINATION®**

**GEOGRAPHY**

**POPULATION GEOGRAPHY, GEOMORPHIC  
PROCESSES AND HAZARDS**

**UNIT 1 – Paper 02**

*3 hours*

**READ THE FOLLOWING INSTRUCTIONS CAREFULLY.**

1. This paper consists of **FOUR** questions in **TWO** sections. Answer **ALL** questions.
2. Write your answers in the spaces provided in this booklet.
3. Do **NOT** write in the margins.
4. A map extract is provided for Question 1.
5. All diagrams must be well labelled.
6. You may use a silent, non-programmable calculator to answer questions.
7. You may use geometrical instruments.
8. If you need to rewrite any answer and there is not enough space to do so on the original page, you must use the extra lined page(s) provided at the back of this booklet. **Remember to draw a line through your original answer.**
9. **If you use the extra page(s) you MUST write the question number clearly in the box provided at the top of the extra page(s) and, where relevant, include the question part beside the answer.**

**DO NOT TURN THIS PAGE UNTIL YOU ARE TOLD TO DO SO.**

Copyright © 2015 Caribbean Examinations Council  
All rights reserved.

02125020/CAPE 2017



**SECTION A**

1. Study the map extract of Nevis (**provided as an insert**), which is on a scale of 1:25 000, and answer the questions that follow.

- (a) (i) With reference to specific examples, describe the distribution of settlement patterns on Nevis.

.....

.....

.....

.....

.....

.....

.....

.....

.....

.....

.....

.....

.....

.....

.....

.....

.....

.....

.....

.....

.....

.....

.....

.....

.....



DO NOT WRITE IN THIS AREA

DO NOT WRITE IN THIS AREA

DO NOT WRITE IN THIS AREA

.....

.....

.....

.....

.....

.....

.....

.....

.....

.....

.....

.....

.....

.....

.....

.....

.....

.....

.....

.....

[11 marks]

- (ii) Outline TWO benefits associated with the situation of Charlestown on the coast.

.....

.....

.....

.....

.....

.....

.....

.....

.....

.....

.....

.....

.....

.....

.....

.....

.....

.....

.....

.....

[4 marks]

GO ON TO THE NEXT PAGE



(b) On the grid provided in Figure 1, draw an outline of the coastal area from 370021 to 420973 and insert the following:

- The coral reef
- The main road
- Course of Camp River and tributaries
- An area of cliffs
- The trigonometrical station

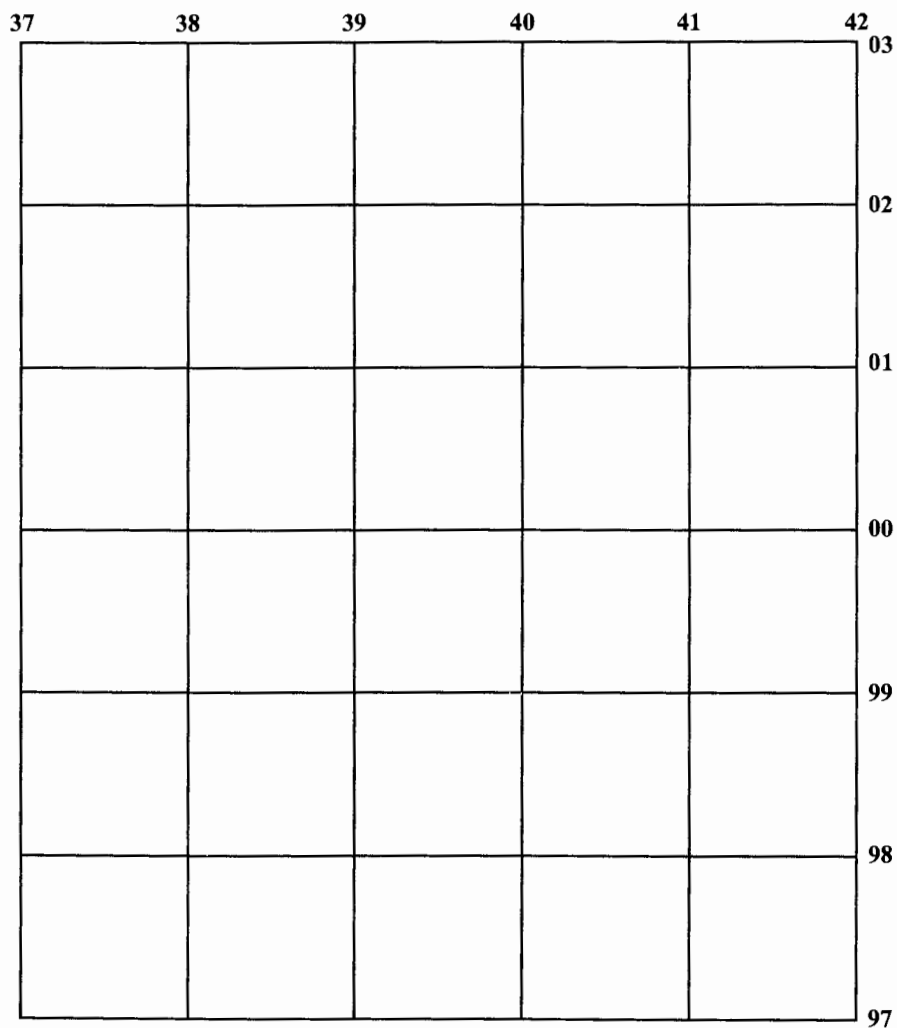


Figure 1. Sketch map

[15 marks]

GO ON TO THE NEXT PAGE



DO NOT WRITE IN THIS AREA

DO NOT WRITE IN THIS AREA

DO NOT WRITE IN THIS AREA

(c) (i) Outline TWO possible hazards of the site of Westbury (353994).

.....

.....

.....

.....

.....

.....

.....

.....

[4 marks]

(ii) Suggest how the Westbury community could be protected from ONE of the hazards described in (c) (i).

.....

.....

.....

.....

.....

.....

[2 marks]

GO ON TO THE NEXT PAGE



(iii) Describe THREE threats to the marine habitats between northing 92 and northing 95.

.....

.....

.....

.....

.....

.....

.....

.....

.....

.....

.....

.....

.....

.....

.....

.....

.....

.....

.....

.....

.....

.....

.....

[9 marks]

**Total 45 marks**



**SECTION B**

**MODULE 1**

2. (a) Study Table 1 which shows forced migration by causes and age groups in India, and answer the question that follows.

**TABLE 1: INDIA – DISTRIBUTION OF FORCED MIGRATION  
BY CAUSES AND AGE, 2007–2008**

Age Group	Natural Disasters (%)	Social/Political Problems (%)	Displacement by Development (%)
0–19	54.5	21.6	23.9
20–39	21.0	57.2	21.8
40–59	21.0	57.2	21.8
60 and over	16.2	75.4	8.4

Draw a well-labelled chart or graph to illustrate the displacement of the 0–19 age group.

[4 marks]

GO ON TO THE NEXT PAGE



DO NOT WRITE IN THIS AREA





- (c) Two contrasting views of population growth were proposed by theorists Malthus and Boserup.

Evaluate the view of EACH theorist with respect to population growth and food supply. Include suitable examples in your response.

.....

.....

.....

.....

.....

.....

.....

.....

.....

.....

.....

.....

.....

.....

.....

.....

.....

.....

.....

.....

.....

.....

.....

.....

.....

.....

DO NOT WRITE IN THIS AREA

DO NOT WRITE IN THIS AREA

DO NOT WRITE IN THIS AREA

GO ON TO THE NEXT PAGE



**MODULE 2**

3. (a) Study Table 2 which shows the characteristics of River X, and answer the questions that follow.

**TABLE 2: CHARACTERISTICS OF RIVER X**

<b>Stream Order</b>	<b>Number of Stream Segments</b>	<b>Total Length of Stream Segments (km)</b>
First order	14	10
Second order	7	20
Third order	2	5
Fourth order	1	5
Total area of river basin = 80 km <sup>2</sup>		

- (i) Calculate the bifurcation ratio of River X.

[4 marks]

- (ii) Calculate the drainage density of the river basin.

[2 marks]

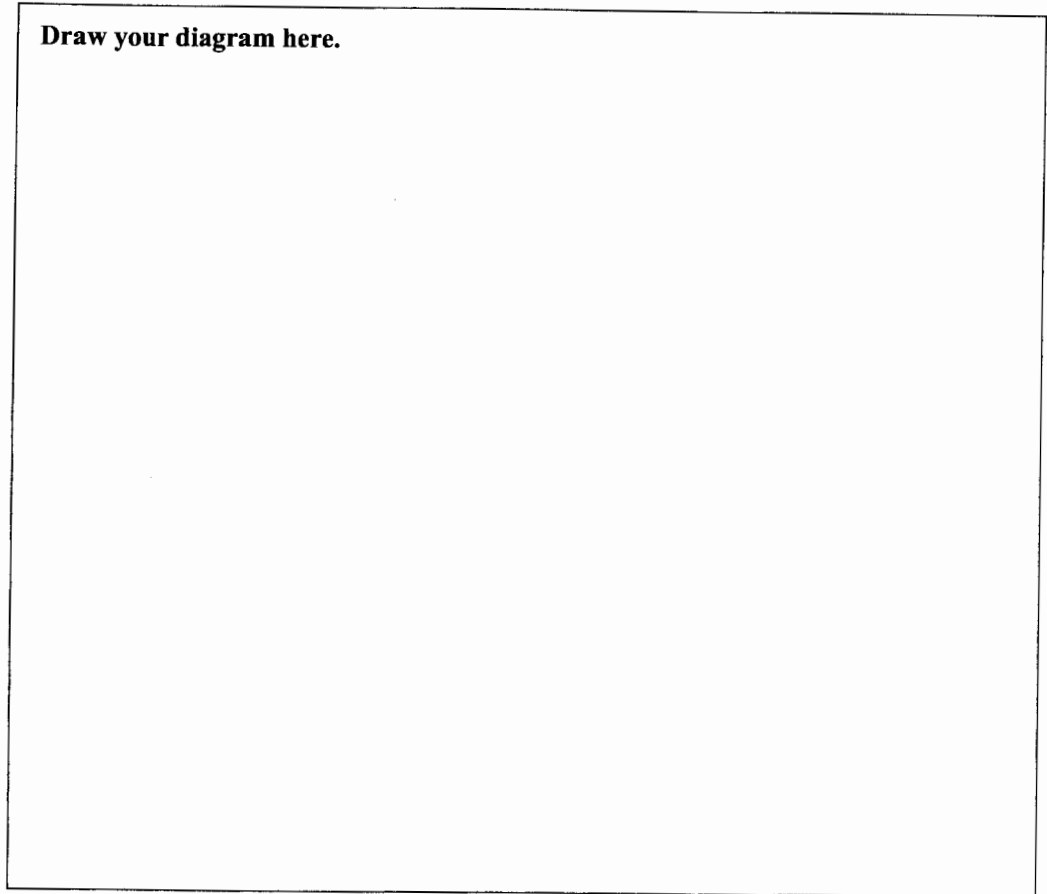






- (d) Write an essay on the influence of climate change on the formation of coral reefs. Include a well-illustrated diagram in your answer.

**Draw your diagram here.**



.....

.....

.....

.....

.....

.....

.....

.....

.....

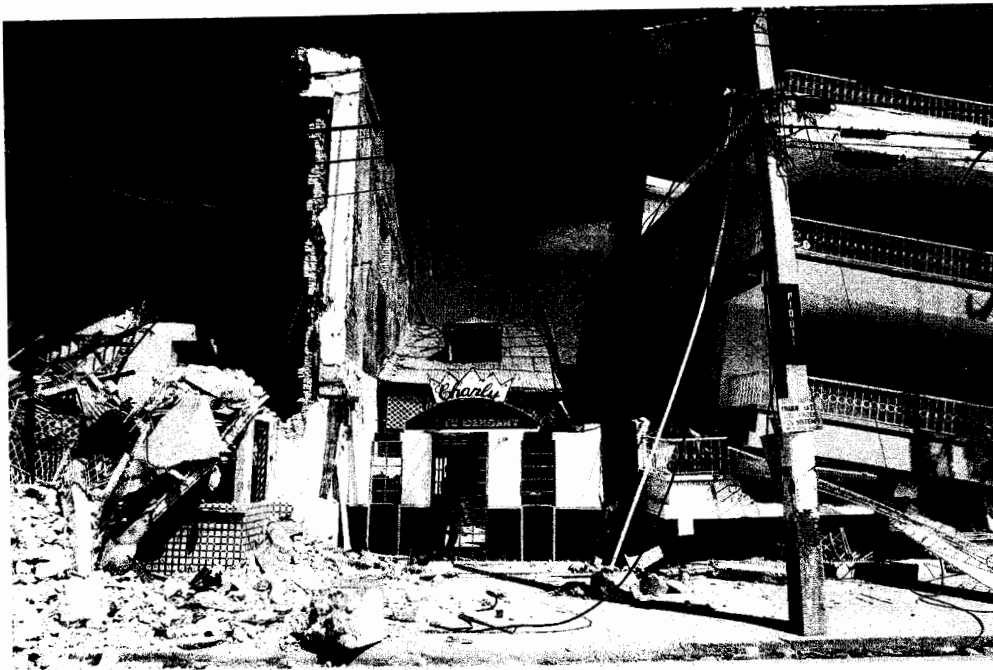
.....

DO NOT WRITE IN THIS AREA DO NOT WRITE IN THIS AREA DO NOT WRITE IN THIS AREA



**MODULE 3**

4. (a) Study Figure 2 which shows damage to buildings after an earthquake, and answer the questions that follow.



Source: <http://handygeography.wordpress.com/gcse/the-restless-earth-revision-materials/earthquake-cause-study-haiti-poor>.

**Figure 2. Damage to building after an earthquake**

- (i) State TWO primary impacts of the earthquake evident in Figure 2.

.....  
.....  
.....

**[2 marks]**

- (ii) State TWO secondary impacts which could result from the damage depicted in Figure 2.

.....  
.....  
.....

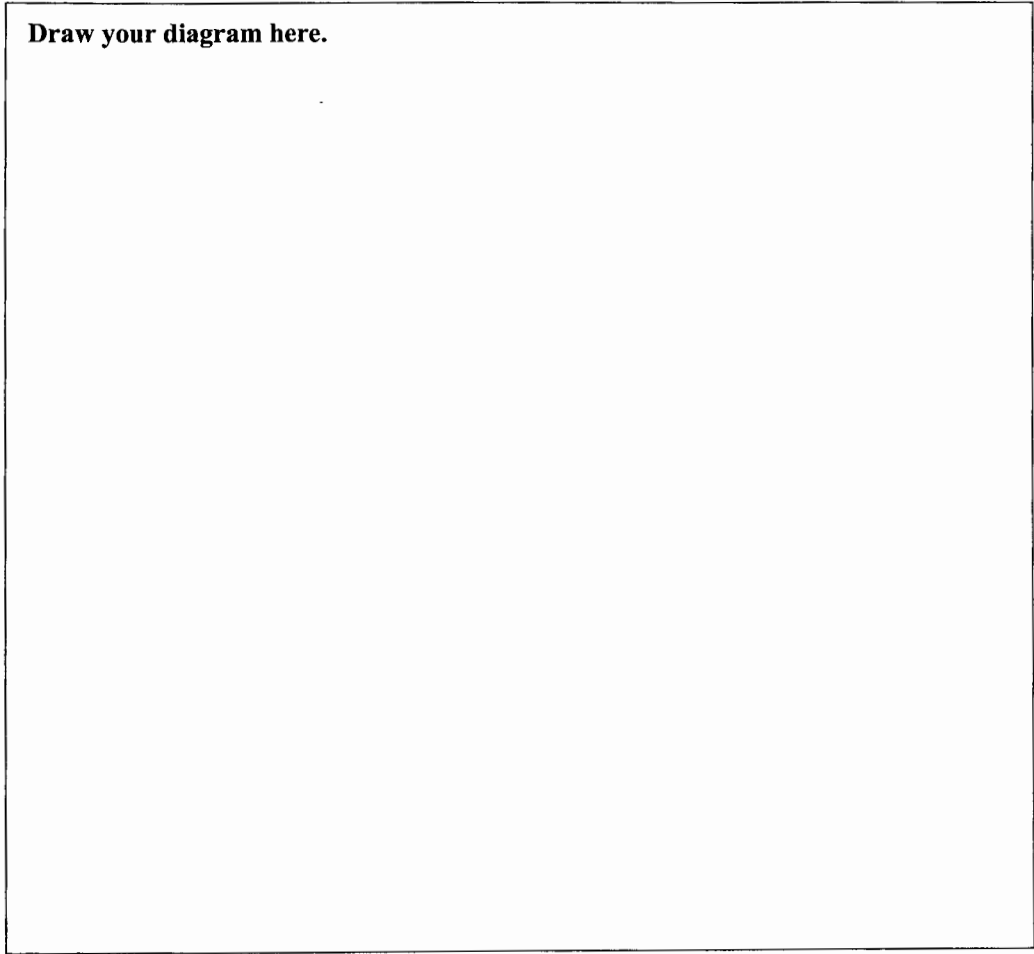
**[2 marks]**

GO ON TO THE NEXT PAGE



- (b) (i) Explain how fold mountains are formed. Include a well-labelled diagram in your response.

Draw your diagram here.



.....

.....

.....

.....

.....

.....

.....

.....

.....

DO NOT WRITE IN THIS AREA



(ii) Outline THREE economic benefits of fold mountains.

.....

.....

.....

.....

.....

.....

.....

.....

.....

.....

.....

.....

.....

.....

.....

.....

.....

.....

.....

.....

.....

.....

.....

.....

.....

[6 marks]

GO ON TO THE NEXT PAGE



DO NOT WRITE IN THIS AREA DO NOT WRITE IN THIS AREA DO NOT WRITE IN THIS AREA



- (c) "The impact of flooding may be prevented, and/or reduced by collective community measures."

Evaluate this statement using TWO measures that communities can take to prepare for flooding, and provide TWO reasons why individuals may not respond to flood warnings.

.....  
.....  
.....  
.....  
.....  
.....  
.....  
.....  
.....  
.....  
.....  
.....  
.....  
.....  
.....  
.....  
.....  
.....  
.....  
.....  
.....  
.....  
.....  
.....

GO ON TO THE NEXT PAGE

